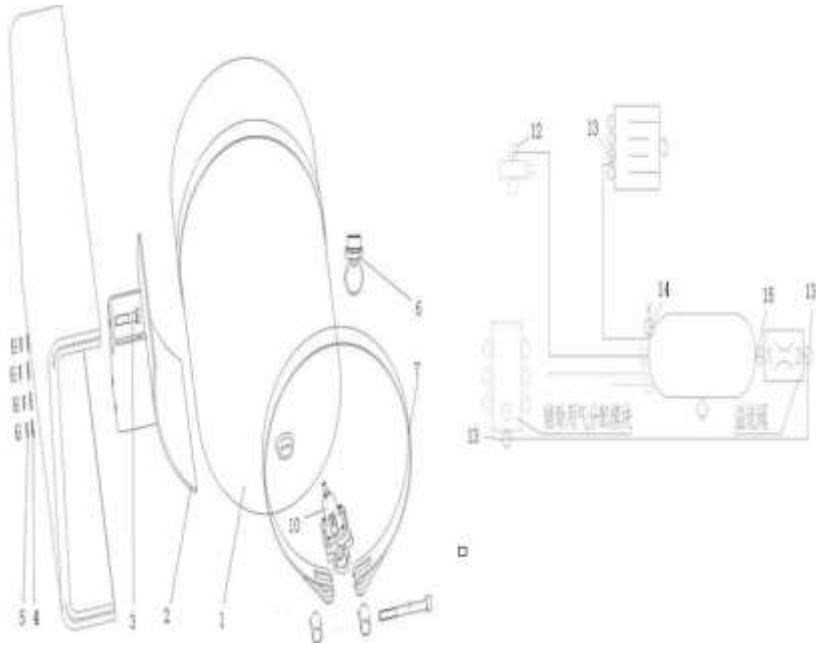


8. 制动及用气系统-Air and Brake System

序号/ No.	名 称 / Designation	页 码 /Page No.
8.01	辅助用气储气筒装置/Air Supply Device	1
8.02	发动机排气制动及操纵装置(一体式)/Engine Exhaust Brake And Control Device	3
8.03	取力器电控气操纵装置(非富勒变速器)/PTO Control System	4
8.04	双桥轴间差速锁气操纵装置/Interaxle Diff. Control System	5
8.05	空气座椅气操纵装置/Seat Air System	6
8.06	双音气喇叭操纵装置/Horn Air System	7
8.07	双桥轮间差速锁气操纵装置(非牵引)/Interwheel Diff. Control System	8
8.08	辅助用气分配模块/Air distributor block	9
8.09	变速器气操纵装置/Gearbox Air System	10
8.10	差速锁工作缸/Cylinder Air	11
8.11	制动气室(中后桥)/Brake Actuator	12
8.12	驾驶室制动装置/Brake Device In Cab	13
8.13	双桥制动装置/Double Drive Axle Brake Device	15
8.14	HOWO组合踏板操纵装置(新开关/共轨)/Combination Pedal Control Device	17
8.15	前轴半挂牵引车制动装置/Front Axle Brake Device	21
8.16	制动系统供能装置/The Braking System Power Device	22
8.17	HOWO双前轴制动装置/Dual Front Axle Brake Device	24
8.18	HOWO底盘制动装置/Chassis Brake Device	26

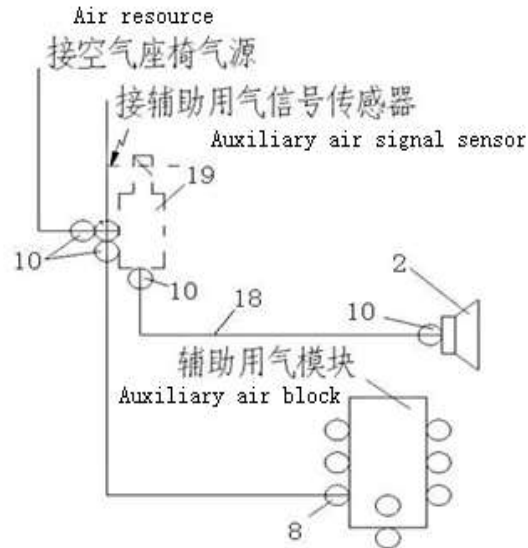
8.01 辅助用气储气筒装置/Air Supply Device



8.01 辅助用气储气筒装置/Air Supply Device

序号	零部件图号	名称	Part Name	数量	备注
No.	Part No.			Qty	Remark
1	WG9000360799	铝合金储气筒总成Φ246/2	Air reservoir	1	
2	WG9731360002	储气筒支架总成	Air reservoir bracket	2	
3	WG9000361015	六角薄螺母M22X1.5	Nut	1	
4	WG9000361016	支撑垫圈M22X1.5	Washer	1	
5	WG9000361017	O型圈20.3X2.4	O-ring	1	
6	WG9000361402	放水阀	Draining valve	1	
7	WG9700360001	储气筒紧固带总成(Φ246)	Tension strap	2	
8	ZQ1841065	六角法兰面螺栓M10	Bolt	4	
9	ZQ32010	六角法兰面螺母M10	Nut	4	
10	WG9000360519	溢流阀0.6MPa无回流	Overflow valve	1	
11	WG9925360874	隔套	Spacer bush	4	
12	WG9000361107	直通接头体NG6/NW4	Nozzle	1	
13	WG9000361104	直通接头体NG12/NW6	Nozzle	1	
14	WG9000361306	T型三通接头体NW9/NG12/1	T-nozzle	1	
15	190003559385	隔壁直通接头体2-M22×1	Nozzle	1	
16	Q5101048	销轴	Pin shaft	2	
17	Q40110	平垫圈	Washer	2	
18	Q5003214	开口销	Pin	2	
19	ZQ32010	六角法兰面螺母M10	Nut	2	

8.06 双音气喇叭操纵装置/Horn Air System

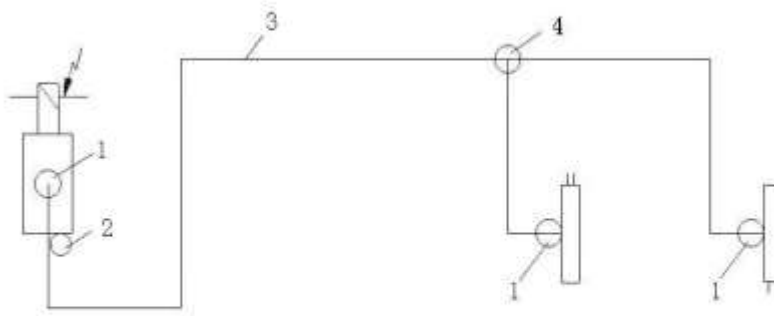


8.06 双音气喇叭操纵装置/Horn Air System

序号 No.	零部件图号 Part No.	名称	Part Name	数量 Qty	备注 Remark
2	WG9000270002	双音气喇叭无支架	Automotive—Air horn	1	
3	WG9725270022	双音气喇叭卡箍	Air horn clip	1	
5	WG9725270023	L型支架	L-bracket	1	
6	WG9725270031	双音气喇叭支架	Automotive—Air horn	1	
8	WG9000361109	直通接头体NG8/NW4	Nozzle	1	
10	WG9000361107	直通接头体NG6/NW4	Nozzle	3	
12	WG9000361001	弹性元件NG6	Connector NG6	2	
14	WG9000361002	卡簧NG6	Snap spring NG6	2	
16	WG9000361003	螺母座NG6	Nut seat NG6	2	
18	190003179782	聚酰胺管(Φ6*1)	Plastic tube	8m	
19	WG9718710003	气喇叭电磁阀	Air horn valve	1	
20	ZQ1800820	六角法兰面带齿螺栓M8	Bolt	1	
21	ZQ1841016	六角法兰面螺栓M10	Bolt	2	

22	ZQ32010	六角法兰面螺母M10	Nut	2	
23	ZQ1840625	六角法兰面螺栓M6	Bolt	2	
24	ZQ32006	六角法兰面螺母M6	Nut	2	

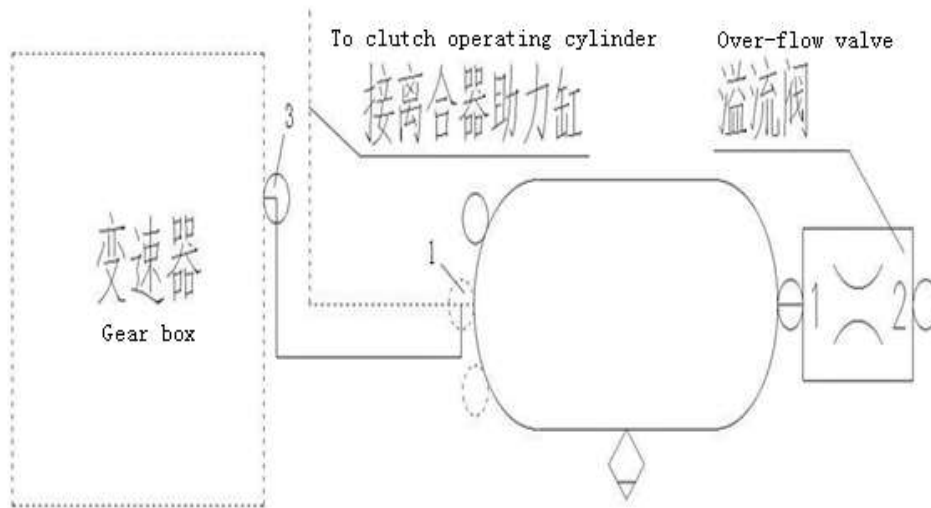
8.07 双桥轮间差速锁气操纵装置(非牵引)/Interwheel Diff. Control System



8.07 双桥轮间差速锁气操纵装置(非牵引)/Interwheel Diff. Control System

序号	零部件图号	名称	Part Name	数量	备注
No.	Part No.			Qty	Remark
1	WG9000361107	直通过接头体NG6/NW4	Nozzle	3	
2	WG9000361010	堵塞M10X1	Plug	1	
3	190003179782	聚酰胺管(Φ6*1)	Plastic tube	10m	
4	WG9000361316	T型三通接头体3-NW4	Nozzle	1	
5	WG9000361001	弹性元件NG6	Gasket	3	
6	WG9000361002	卡簧NG6	Clip	3	
7	WG9000361003	螺母座NG6	Nut	3	

8.09 变速器气操纵装置/Gearbox Air System

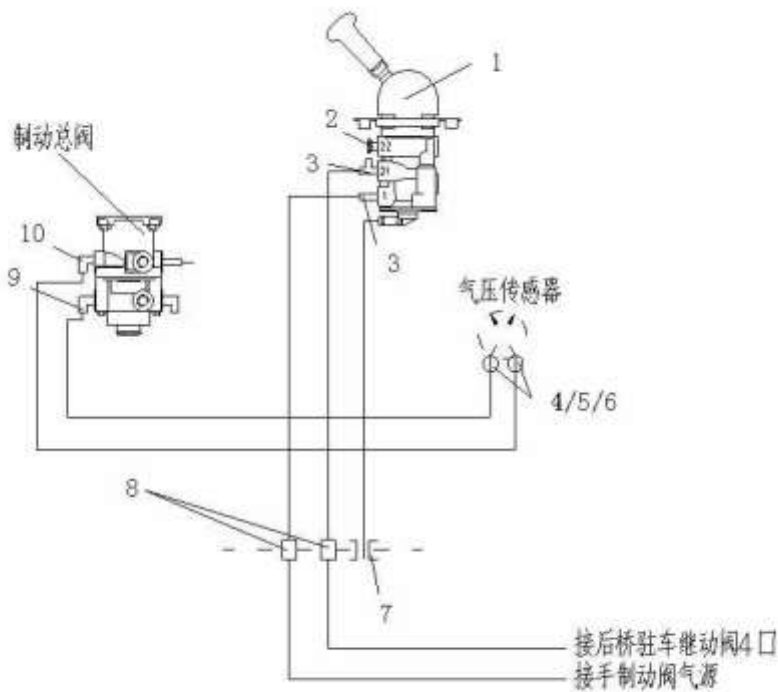


8.09 变速器气操纵装置/Gearbox Air System

序号 No.	零部件图号 Part No.	名称	Part Name	数量 Qty	备注 Remark
1	WG9000361304	L型三通接头体NG12/2-NW6	"L" Connector NG12/2-NW	1	
3	WG9000361201	直角接头体NG8/NW6	Angle connector NG8/NW6	1	
5	WG9000361004	弹性元件NG8	Connector NG8	1	
7	WG9000361005	卡簧NG8	Clip NG8	1	
9	WG9000361006	螺母座NG8	Nut seat NG8	1	
11	190003179781	聚酰胺管 (Φ8*1)	Plastic pipe (Φ8*1)	2m	

8	WG9000361403	组合踏板支架过板接头NG8	Nozzle	2	
9	WG9000361107	直通接头体NG6/NW4	Nozzle	3	
10	WG9000361207	直角接头体NG6/NW4	Nozzle	1	
11	ZQ1840616	六角法兰面螺栓M6	Bolt	2	
12	Q40306	弹簧垫圈	Spring washer	2	
13	WG9000361004	弹性元件NG8	Gasket	2	
14	WG9000361005	卡簧NG8	Clip	2	
15	WG9000361006	螺母座NG8	Nut	2	
16	190003179782	聚酰胺管 (Φ6*1)	Plastic tube	2m	
17	190003179781	聚酰胺管 (Φ8*1)	Plastic tube	3m	
18	WG9003171390	塑料紧固带B5*180	Cable binder	5	
19	WG9719360019	堵塞	Plug	1	
20	WG9725360036	方型堵塞	Plug	1	

8.12 驾驶室制动装置/Brake Device In Cab

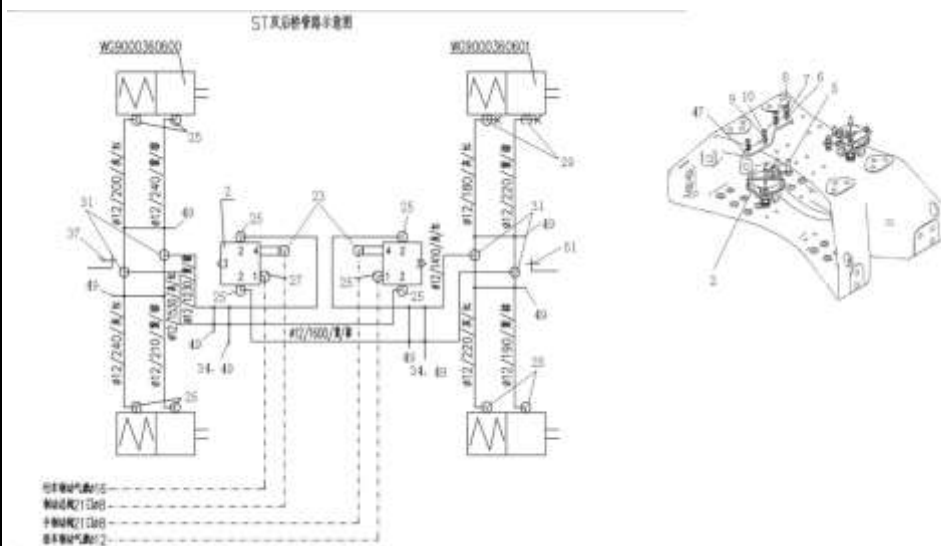


8.12 驾驶室制动装置/Brake Device In Cab

序号	零部件图号	名称	Part Name	数量	备注
No.	Part No.			Qty	Remark
21	WG9718360563	管束固定支架(前面板)	Bracket	1	
22	WG9718360078	管束固定支架	Bracket	1	

9	ZQ1840812	六角法兰面螺栓M8	Screw	4	
10	ZQ1840825	六角法兰面螺栓M8	Nut	4	
11	WG9000361004	弹性元件NG8	Connector NG8	2	
13	WG9000361005	卡簧NG8	Snap spring NG8	2	
15	WG9000361006	螺母座NG8	Nut seat NG8	2	
17	WG9000361007	弹性元件NG12	Connector NG12	14	
19	WG9000361008	卡簧NG12	Snap spring NG12	14	
21	WG9000361009	螺母座NG12	Nut seat NG12	14	
23	WG9000361201	直角接头体NG8/NW6	Nozzle	2	
25	WG9000361204	直角接头体NG12/NW9	Nozzle	11	
27	WG9000361203	直角接头体NG12/NW12	Nozzle	1	
29	WG9000361406	T型接头体NW9/NG12/TEST	Nozzle	2	
31	WG9000361310	T型三通接头体3-NW9	Nozzle	4	
33	1,90003E+11	聚酰胺管(Φ12*1.5)	Plastic tube	9	
34	WG9725360088	塑料紧固带总成	Tension strap	4	

8.13 双桥制动装置/Double Drive Axle Brake Device

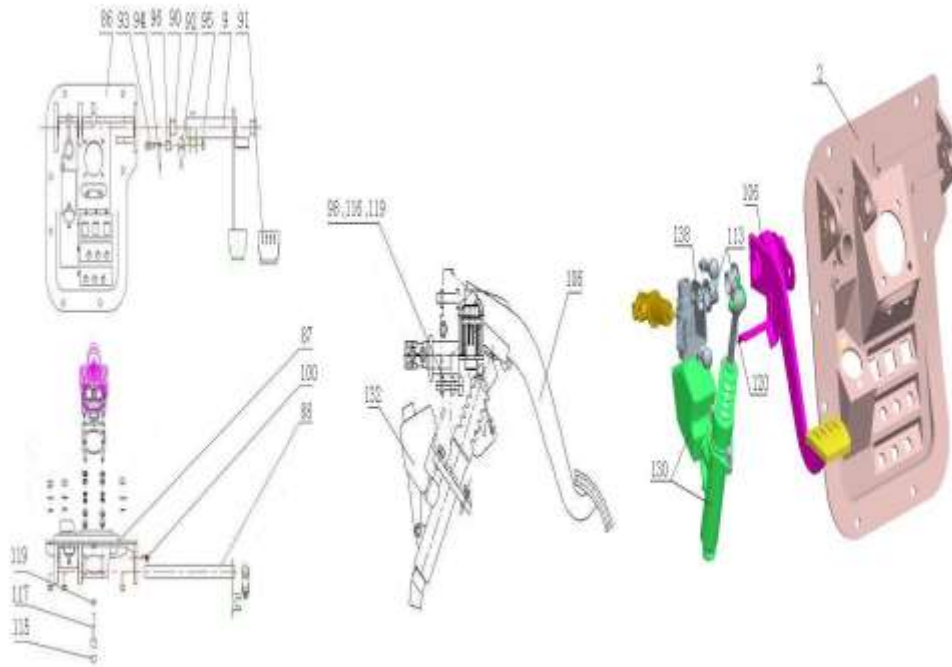


8.13 双桥制动装置/Double Drive Axle Brake Device

序号	零部件图号	名称	Part Name	数量	备注
No.	Part No.			Qty	Remark
37	WG9725360187	管束固定支架(ST双后桥)	Bracket	1	
40	WG9100360134	隔环	Spacer	5	
41	752W51715-0182	管束固定支架(ST双后桥)	Bracket	1	
47	WG9725360044	继动阀支架	Relay valve bracket	2	

10	WG9725360059	回位弹簧	Returnig ring	1	
11	AZ9123360113	踏板 (2814822520941)	Plate	1	
12	WG9123360067	堵头 (2819602003691)	Plug	1	
13	WG9000361011	堵塞NG8-M16×1.5	Plug	1	
72	WG9000361004	弹性元件NG8	Gasket	7	
73	WG9000361005	卡簧NG8	Clip	7	
74	WG9000361006	螺母座NG8	Nut	7	
75	WG9000361007	弹性元件NG12	Gasket	4	
77	WG9000361008	卡簧NG12	Clip	4	
79	WG9000361009	螺母座NG12	Nut	4	
84	AZ9725361040	HOWO组合踏板操纵总成(新	Pedal ass.	1	
86	AZ9725360020	组合支架	Bracket assembly	1	
87	WG9719360099	密封胶带(长1000)	Tape	1	
88	WG9719360051	芯轴总成	Shaft assembly	1	
89	WG9719360055	制动踏板总成	Braking pedal assembly	1	
90	AZ9719360060	自润滑衬套	Bushing	2	
91	AZ9123230226	踏板橡胶罩	Rubber cover	1	

8.14 HOWO组合踏板操纵装置(新开关/共轨)/Combination Pedal Control Device

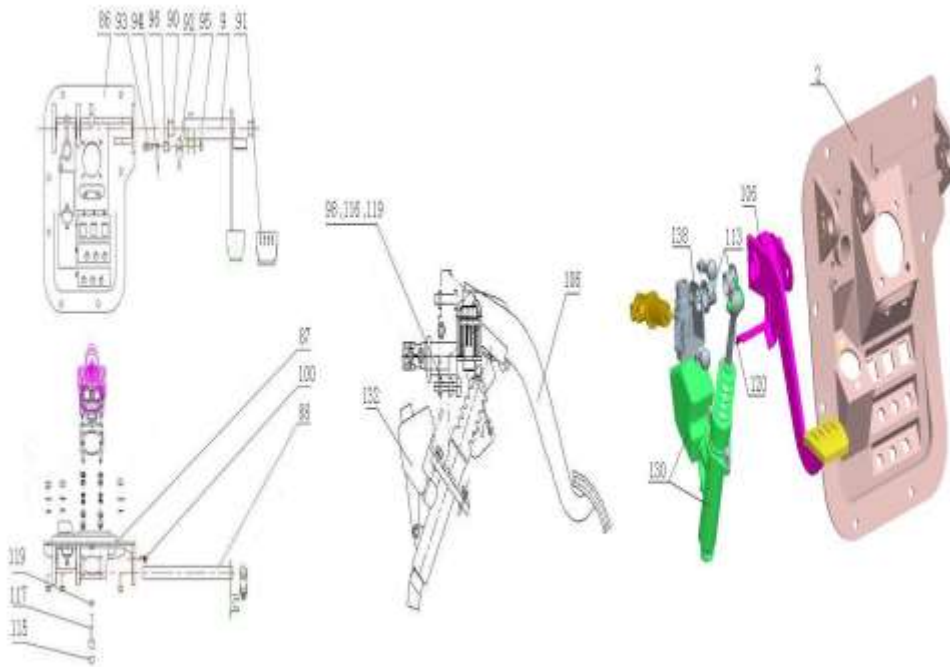


8.14 HOWO组合踏板操纵装置(新开关/共轨)/Combination Pedal Control Device

序号	零部件图号	名称	Part Name	数量	备注
No.	Part No.			Qty	Remark
92	WG9719360063	挺杆	Rod	1	
93	Q173B0845	六角头螺杆带孔螺栓	Bolt	1	

94	Q5002016	开口销	Pin	1	
95	Q341B08	1型六角螺母-细牙	Nut	1	
96	WG9719360062	销轴	Pin	1	
97	Q150B0845	六角头螺栓	Bolt	1	
98	AZ9123360067	堵头 (2819602003691)	Plug	1	
99	Q340B08	1型六角螺母	Nut	1	
100	Q1840616	六角法兰面螺栓	Bolt	1	
101	WG9719360005	制动总阀 ($\Delta p=0.3$)	Service brake valve	1	
102	Q33208	2型全金属六角锁紧螺母	Nut	4	
103	Q40308	弹簧垫圈	Spring washer	4	
104	AZ9725230010	离合器操纵部分(共轨)	Clutch control section (com	1	
106	WG9719230225	离合器踏板总成	Clutch pedal assembly	1	
107	AZ9123360113	踏板 (2814822520941)	Clutch foot pedal	1	
113	AZ9719360060	自润滑衬套	Bushing	2	
114	AZ9123230226	踏板橡胶罩	Rubber cover	1	
115	AZ9123360067	堵头 (2819602003691)	Plug	2	
116	WG9925230116	限位螺栓	Bolt	1	
117	Q150B0845	六角头螺栓	Bolt	1	

8.14 HOWO组合踏板操纵装置(新开关/共轨)/Combination Pedal Control Device

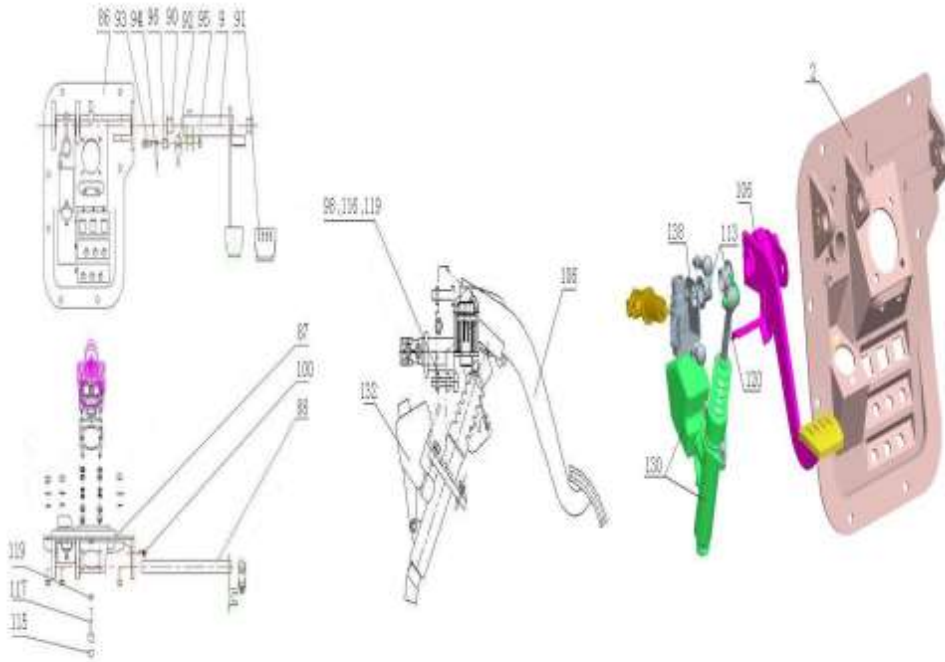


8.14 HOWO组合踏板操纵装置(新开关/共轨)/Combination Pedal Control Device

序号	零部件图号	名称	Part Name	数量	备注
No.	Part No.			Qty	Remark
118	Q40308	弹簧垫圈	Spring washer	2	

119	Q340B08	I型六角螺母	Nut	2	
120	WG9719230228	销轴总成	Pin shaft ass.	1	
123	Q150B0616	六角头螺栓	Bolt	1	
124	Q40106	平垫圈	Washer	1	
125	Q40306	弹簧垫圈	Spring washer	1	
126	Q340B06	I型六角螺母	Nut	1	
127	WG9719230222	离合器总泵推杆	Rod ass.	1	
128	WG9123230053	无内圈滚针轴承	Needle bearing	1	
129	WG9719230229	垫圈	Washer	2	
130	WG9719230023	离合器总泵及储油罐总成	Clutch master cylinder and t	1	
133	WG9719230231	弹簧座	Base	1	
134	Q150B0820	六角头螺栓	Bolt	2	
135	Q40108	平垫圈	Washer	2	
136	Q40308	弹簧垫圈	Spring washer	2	
137	AZ9719230232	回位弹簧	Spring	1	
138	WG9719230058	信号开关支架	Bracket	1	
139	Q150B0620	六角头螺栓	Bolt	1	
140	Q40306	弹簧垫圈	Spring washer	1	
141	Q40106	平垫圈	Washer	1	

8.14 HOWO组合踏板操纵装置(新开关/共轨)/Combination Pedal Control Device

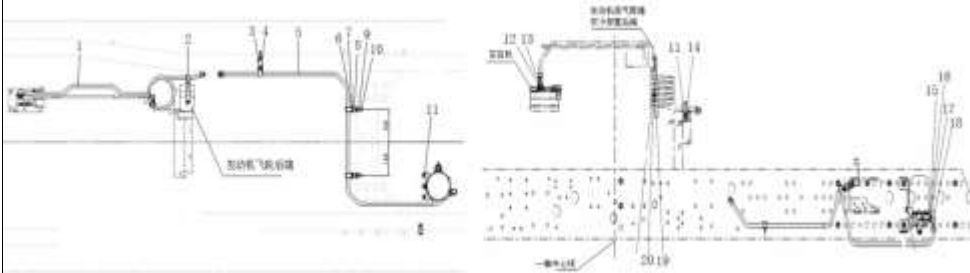


8.14 HOWO组合踏板操纵装置(新开关/共轨)/Combination Pedal Control Device

序号	零部件图号	名称	Part Name	数量	备注
No.	Part No.			Qty	Remark

序号	零部件图号	名称	Part Name	数量	备注
No.	Part No.			Qty	Remark
1	WG9718360204	管子15总成空压机/软管	Pipe	1	
2	WG9718360010	角形支架	Bracket	1	
3	199012360441	角形支架	Bracket	1	
4	WG9000365401	单管夹(φ15)	Clip	1	
5	WG9718360371	管子15总成波纹管/干燥器	Pipe	1	
6	ZQ1840635	六角法兰面螺栓	Bolt	1	
7	ZQ32006	六角法兰面螺母M6	Nut	1	
8	WG9725472075	支架	Bracket	2	
9	ZQ1841035	六角法兰面螺栓M10	Bolt	1	
10	ZQ32010	六角法兰面螺母M10	Nut	1	
11	ZQ32008	六角法兰面螺母M8	Nut	1	
12	WG9112360189	直通接头体(M26/M22)	Nozzle	1	
13	190003098031	密封垫圈	Sealing	1	
14	ZQ1840845	六角法兰面螺栓M8	Bolt	1	
15	WG9000361017	O型圈20.3X2.4	O-ring	1	
16	WG9000361016	支撑垫圈M22X1.5	Ring	1	
17	WG9000361015	六角薄螺母M22X1.5	Nut	1	
18	WG9100362002	卡套式直角接头体	Nozzle	1	
19	WG9125360209	螺旋管固定支架	Pipe bracket	1	
20	WG9000365403	双管夹(φ15)	Clamp	1	

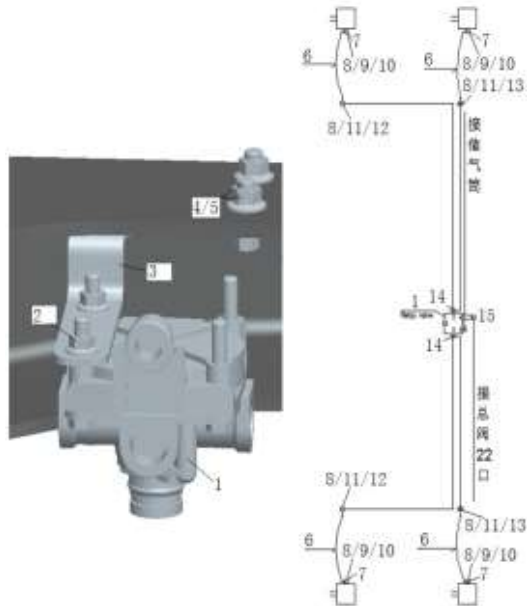
8.16 制动系统供能装置/The Braking System Power Device



8.17 HOWO双前轴制动装置/Dual Front Axle Brake Device

序号	零部件图号	名称	Part Name	数量	备注
No.	Part No.			Qty	Remark
1	WG9000360524	继动阀	Relay valve	1	
2	ZQ32008	六角法兰面螺母M8	Nut	2	
3	WG9725360946	继动阀支架	Relay valve bracket	1	
4	ZQ1841025	六角法兰面螺栓M10	Bolt	2	
5	ZQ32010	六角法兰面螺母M10	Nut	2	
6	WG17017360450	制动软管总成	Brake hose assembly	4	
7	190003559955	直角接头体	Nozzle	4	
8	WG9000361015	六角薄螺母M22X1.5	Nut	4	
9	WG9000361016	支撑垫圈M22X1.5	Ring	4	
10	WG9000361017	O型圈20.3X2.4	O-ring	4	
11	WG9000361014	六角薄螺母M18X1.5	Nut	4	
12	WG9000361204	直角接头体NG12/NW9	Nozzle	2	
13	WG9000361101	直通接头体NG12/NW9	Nozzle	2	
14	WG9000361305	L型三通接头体NG12/2-NW9	Nozzle	2	
15	WG9000361201	直角接头体NG8/NW6	Nozzle	1	
16	WG9918360822	管束支架	Bracket	1	
17	ZQ32008	六角法兰面螺母M8	Nut	1	
18	190003179785	聚酰胺管(Φ12*1.5)	Plastic tube	5m	
19	WG9000361004	弹性元件NG8	Connector NG8	1	
20	WG9000361005	卡簧NG8	Snap spring NG8	1	

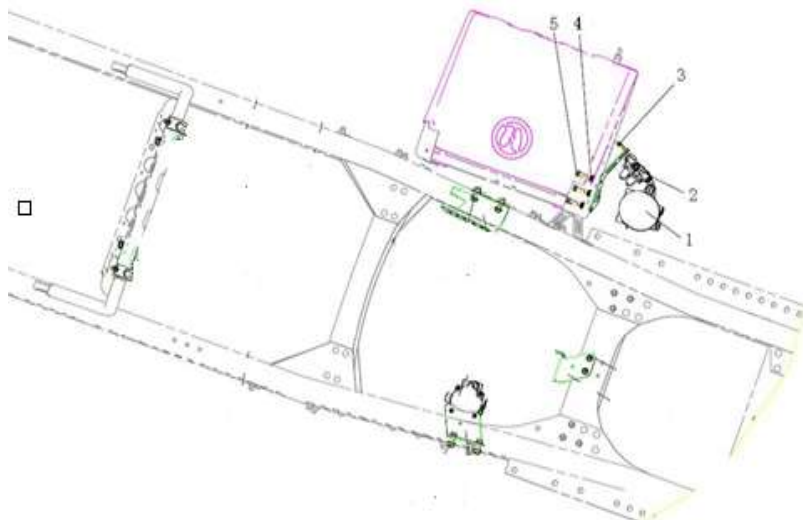
8.17 HOWO双前轴制动装置/Dual Front Axle Brake Device



8.18 HOWO底盘制动装置/Chassis Brake Device

序号 No.	零部件图号 Part No.	名称	Part Name	数量 Qty	备注 Remark
1	WG9000360521	空气干燥器	Airdryer	1	
2	WG9000360523	四回路保护阀	4-circuitprotectingvalve	1	
3	Q151C1230	六角头螺栓(细牙)	Screw	3	
4	Q40112	平垫圈	Washer	3	
5	Q40312	弹簧垫圈	Spring washer	3	
6	WG9725360955	排气弯通	Exhaust bent on	1	
7	WG9725360956	成形胶管	Hose	1	
8	1.90004E+11	软管卡箍	Hose retainer	1	
9	WG9918360817	干燥器支架	Airdryer bracket	1	
10	ZQ1851440	六角法兰面螺栓M14*1.5	Bolt	2	
11	ZQ32314	六角法兰面螺母M14	Nut	2	
12	ZQ1840816	六角法兰面螺栓M8	Bolt	2	
13	WG9925360925	成形软管(干燥器到四回)	Hose	1	
14	WG9000360782	铝合金储气筒总成Φ276/4	Air reservoir	2	
15	WG9000360786	铝合金储气筒总成Φ276/3	Air reservoir	1	
16	WG9700360002	储气筒紧固带总成(Φ276)	Tension strap	6	
17	WG09 190017	拉紧销	Tension bolt	6	
18	WG700 550013	张紧销	Tension bolt	6	
19	Q218B0880	内六角圆柱头螺钉	Bolt	6	
20	WG9000360799	铝合金储气筒总成Φ246/4	Air reservoir	1	

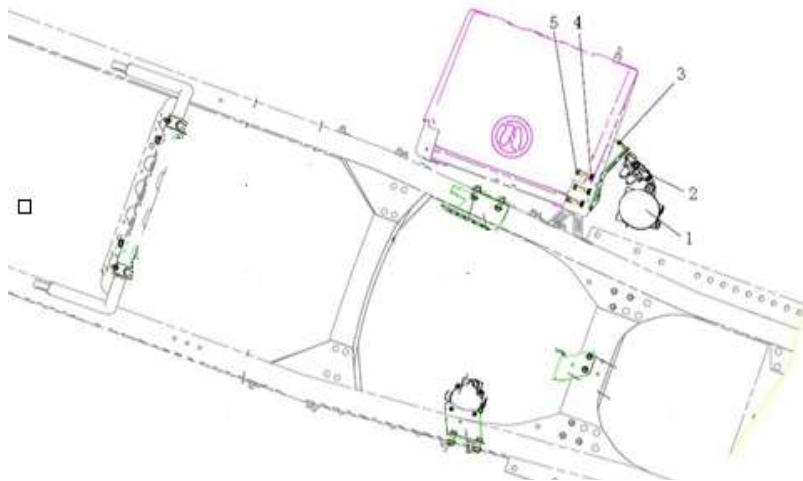
8.18 HOWO底盘制动装置/Chassis Brake Device



8.18 HOWO底盘制动装置/Chassis Brake Device

序号	零部件图号	名称	Part Name	数量	备注
No.	Part No.			Qty	Remark
21	WG9725367811	储气筒支架总成	Air reservoir bracket	1	
22	ZQ1851440	六角法兰面螺栓M14*1.5	Bolt	4	
23	ZQ32314	六角法兰面螺母M14	Nut	4	
24	WG9700360003	储气筒紧固带总成 (Φ24)	Tension strap	2	
25	WG09 190017	拉紧销	Tension bolt	2	
26	WG700 550013	张紧销	Tension bolt	2	
27	Q218B0880	内六角圆柱头螺钉	Bolt	2	
28	WG9000360781	铝合金储气筒总成Φ206/3	Air reservoir	1	
29	AZ9725360028	5L储气筒支架	Air reservoir bracket	1	
30	ZQ1841030	六角法兰面螺栓M10	Bolt	2	
31	ZQ1840825	六角法兰面螺栓M8	Bolt	3	
32	190003179781	聚酰胺管 (Φ8*1)	Plastic tube	26m	
33	190003179785	聚酰胺管 (Φ12*1.5)	Plastic tube	26m	
34	WG9003170002	聚酰胺管 (Φ16*2)	Plastic tube	15m	
35	WG9000361004	弹性元件NG8	Connector NG8	1	
36	WG9000361005	卡簧NG8	Snap spring NG8	1	
37	WG9000361006	螺母座NG8	Nut seat NG8	1	
38	WG9000361007	弹性元件NG12	Connector NG12	16	
39	WG9000361008	卡簧NG12	Snap spring NG12	16	
40	WG9000361009	螺母座NG12	Nut seat NG12	16	

8.18 HOWO底盘制动装置/Chassis Brake Device





8.18 HOWO底盘制动装置/Chassis Brake Device

序号	零部件图号	名称	Part Name	数量	备注
No.	Part No.			Qty	Remark
41	WG9000361402	放水阀	Draining valve	4	
42	WG9000361012	堵塞NG12-M22X1.5	Plug	6	
43	WG9000361203	直角接头体NG12/NW12	Nozzle	1	
44	WG9000361201	直角接头体NG8/NW6	Nozzle	1	
45	WG9000361301	L型三通接头体NG12/NW12	Nozzle	1	
46	WG9000361401	压力测试接头总成	Pressure test connector	1	
47	WG9000361204	直角接头体NG12/NW9	Nozzle	8	
48	WG9000361101	直通接头体NG12/NW9	Nozzle	4	
49	WG9000361104	直通接头体NG12/NW6	Nozzle	2	
50	WG9000361110	直通接头体NG12/NW12	Nozzle	1	
51	WG9000361306	T型三通接头体NW9/NG12/	T-nozzle	2	
52	WG9000361106	直通接头体NG8/NW6	Nozzle	2	
53	WG9000361202	直角接头体NG12/NW6	Nozzle	1	
54	AZ9003179031	穿线护套	Protect pipe	150mm	
55	190003179046	穿线护套	Protect pipe	150mm	
56	190003179046	穿线护套	Protect pipe	150mm	
57	WG17017361000	螺旋形护管	Protect pipe	4	
58	WG9123360300	波纹护套 (φ30 黑色)	Protect pipe	200mm	
59	WG9100360134	隔环	Spacer ring	10	
60	WG9100360135	隔环	Spacer ring	10	

8.18 HOWO底盘制动装置/Chassis Brake Device

